



# Barrowby Church of England Primary School

Newsletter

2 December 2015

## DIARY DATES

Dates for the School Year can be found on our website.

[CLICK HERE](#) to go to the calendar.

### Thursday 3 December

KS1 Nativity Performance  
1.45pm



### Friday 4 December

KS1 Nativity Performance  
9.30am  
Year 5 & 6 School Choir singing at Walton Girls' High School Carol Festival 5.00pm

### Monday 7 December

Years 3-6 School Choir singing at The George Centre 1.30pm

### Tuesday 8 December

Years 5 & 6 School Choir singing at Priory Ruskin Carol Festival 5.45pm

### Wednesday 9 December

Years 4-6 School Choir singing at Lincoln Cathedral Carol Service

### Thursday 10 December

Key Stage 2 Carol Service  
Barrowby Church  
2.00pm and 6.00pm

### Friday 11 December

Our Traditional Christmas Fair  
5.00pm—7.00pm


### Sunday 13 December

[Barrowby Church Families Carols 10.30am](#)

### Monday 14 December

Christmas Potted Sports

### Tuesday 15 December

Christmas Service  
  
Our 'Village Advent Calendar' Window is revealed.

 **Wednesday 16 December**  
Party and Panto Day  
  
Christmas Dinner.

### Thursday 17 December

School closes.

### Tuesday 5 January

School-re-opens

Dear Parents/Carers

Welcome to another, fun-filled week, here at Barrowby CE Primary School. Advent has begun and with it: the first of our school Nativities, the decoration of our Christmas Tree and the setting of our school Nativity scene, as well as the debut of our new 'Barrowby Post Box.' I hope you enjoy reading this week's news.

Mr L Batey Headteacher

## Events in School

### Getting ready for Christmas



Children having been helping to decorate our school in preparation for our Christmas celebrations.

Children from Year Groups 1 to 6 helped to decorate our School Christmas Tree, and children from our Reception Year helped to arrange our Nativity Scene. Well done to everyone!



### Reception Christmas Assembly

Our Reception children began our Christmas Celebrations on Tuesday, with their delightful performance of 'Jesus in the Manger'. Parents and governors joined us to enjoy our youngest children acting and singing their 'hearts out' in their very first school Nativity. Well done children, and all the staff who have worked so hard with the children.



### A delicious mug of hot chocolate—or is it?

Each year, our Year 6 children design our school post box, for children to send their Christmas cards to each other. This year's chosen design is by Kai. A mug of hot chocolate, mmmm...I am sure you will agree that it is a lovely, cheerful and warming design—to get us in the Christmas spirit.

### Visit from Olympian Swimmer Sophie Allen

On Thursday 26th November, Year 6 enjoyed a great afternoon with the inspirational Sophie Allen. As well as learning about her life, the children took part in some activities to explore how psychology and concentration are important within sport.



The children were delighted to see and hold Sophie's medals and they also had the opportunity to interview Sophie and ask her some thoughtful questions.

## Christmas Events still to come

We are looking forward to our Key Stage 2 Nativity Performances later on this week. This week and next is exceptionally busy, especially for our choir, who will be singing at The George Centre in Grantham, Walton Girls' High School, Priory Ruskin Academy, and Lincoln Cathedral, as well as preparing for our Key Stage 2 Carol Concert on 10 December. Then we have our Christmas Fair on 11 December, and, in the very last week of term, our school Christmas Service, and revealing of our 'Village Advent Calendar' window, as well as our Party, Christmas Dinner and Panto day! Wow!



## School meals— changes to online ordering from Ideal

Our hot school meal provider, Ideal. Have advised us of a change to the deadline for online orders: the deadline is changing from changing from Tuesday at midnight, to **Monday at midnight**. A message will soon be displayed on parents online dashboards to advise of the changes so parents are given plenty of notice to get in to a new routine.

The first new online deadline will be **Monday 28th December 2015 at midnight for meal orders for the first week of the new term.**

## First Admission to Primary School—September 2016

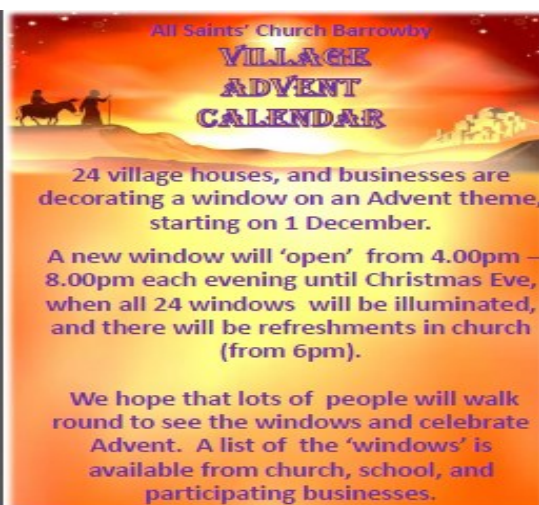
The process for applying for places in Reception for September 2016 begins this month. You must apply through Lincolnshire County Council, who co-ordinate all applications. Full information can be found on their [website](#), or you can collect an information pack from school (available from 16 November).

**All parents who have a child due to start school next September (date of birth 1 September 2011 to 31 August 2012) must apply — even if an older sibling is already at school.**

The key dates for the application process are:

**15 January 2016, 12 noon:** closing date for parents to apply to Lincolnshire County Council. If you do not apply by this date, it may affect your offer of a place.

**18 April 2016:** parents can view their offered school place online.



## Scout Christmas Post

Barrowby Scouts are providing a Christmas postal service again this year—you can find details [here](#).

## Signposting

We are happy to signpost events and organisations which may be of interest to our school community. You can find information about activities for children [here](#), and support services for families [here](#). New opportunities are added frequently, so please check regularly. However, we cannot recommend or endorse any activity or organisation outside of school, and parents/carers must satisfy themselves of their suitability.