



Barrowby Church of England Primary School

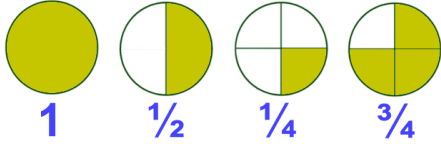
Standard Six Checklist

23,456,789.987

Ten millions
Millions
Hundred thousands
Ten thousands
Thousands
Hundreds
Tens
Ones
Tenths
hundredths
thousandths

Can you read, write and use numbers up to 10 000 000?
What is five hundred thousand and ninety-seven in numbers?

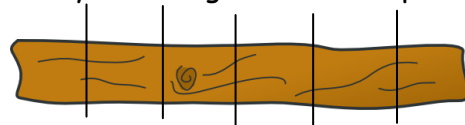
Can you use negative numbers in context and problem solving?



Can you mentally calculate mixed operations, including multi-step problems and use the formal written methods?

Can you use all four operations to solve fraction problems?

Sam starts piano lessons and practises for 1 and 3/4 hours a day, how long has he been practising after 8 days?

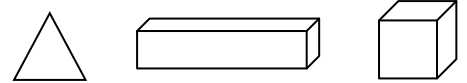


Can you accurately calculate and use percentages?

A carpenter needs to cut a plank of wood that is 3.75m long into 5 equal pieces. What percentage of the plank is each piece?

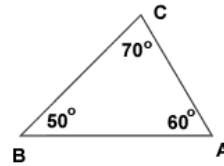
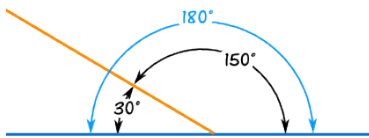
Can you use and create simple formulae using symbols and letters?

Do you know how to calculate the area of parallelograms, triangles, cubes and cuboids?



Can you investigate the relationship between the area and perimeter identifying examples where the same area can have the same perimeter and vice versa?

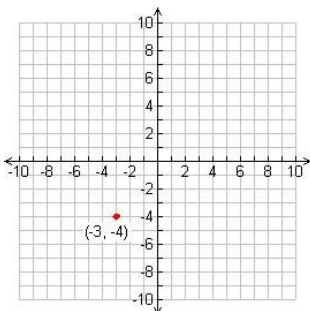
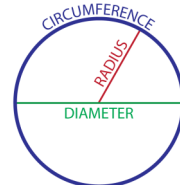
Do you know how to find unknown angles in triangles, quadrilaterals, regular polygons and straight lines?



How many degrees are there in a triangle? How does this help you find the missing angle?

Do you know and use the parts of circles?

How do you calculate the radius, diameter and circumference of a circle?



Do you know how to use co-ordinates to describe position in all four quadrants and plot specified points, as well as draw and translate shapes?

Do you know how to construct a pie chart and line graph?
What do you need to do to create a pie chart?

Can you use pie charts and line graphs to solve problems?

Do you understand the term mean as an average $= \frac{2+3+4+5+6+6+9+10+13+15}{10} = \frac{73}{10} = 7.3$ and are you able to calculate it?