



**DIARY DATES**

Dates for the School Year can be found on our website. [CLICK HERE](#) to go to the calendar.

**Friday 11th December**  
KSI Nativity Performance



**Tuesday 15th December**  
Christmas Potted Sports



**Wednesday 16th December**  
Christmas Party Day



**Wednesday 16th December**  
Virtual Pantomime– Cinderella



**Thursday 17th December**  
Christmas Service  
Last day of term



**Governor Meetings**

FRP Meeting  
1st February 2021



To see the latest Fobs minutes  
please click [here](#).

Next meeting:  
TBC

Please click [HERE](#) for Easy Fundraising  
Link

**Newsletter 11th December 2020**

*For God so loved the world, that he gave his only Son, that whoever believes in him should not perish but have eternal life. John 3:16*

Dear Parents/Carer

Wow, here we are with only 4 days left to go before the Christmas holidays. I can't quite believe we've made it through the term, uninterrupted...fingers crossed for the next four days.

I must ask you all to remain vigilant and continue to follow the school's guidance as set out in the risk assessments available on our school website.

This week, we were contacted by the DFE to outline the school's requirements for the Christmas holidays. We have been asked to confirm to all parents that if your child develops symptoms up to 48 hours after being in school, when the school closes next Thursday then you are required to email the school on [enquiries@barrowby.lincs.sch.uk](mailto:enquiries@barrowby.lincs.sch.uk) to inform the school of the child's positive test result.

We will then communicate to the Health Protection Team and Public Health England and will advise anyone of the need to self-isolate over the Christmas period, including other children and staff in the affected bubble. The school are required to monitor the school email up to 6 days after the school closes; until 23rd December 2020.

Any new positive cases for our children, 48 hours after the school closes, that come to light on Sunday 20th December will not cause anyone else to self-isolate. There is no requirement to monitor the school's email after the 23rd December.

Adults that may become symptomatic and/or gain a positive test result should follow the governments and or the Track and Trace service's advice, over the Christmas period.

In order to give all staff a break over the Christmas period, I will be undertaking this task on behalf of our school family: our children, their parents and our staff. So all our staff can enjoy an uninterrupted Christmas holiday with their families.

So as you can see, we might be closing on Thursday 17th December but please maintain contact with the school and advise of any children with new positive cases so the appropriate advice can be given to limit the transmission of the virus.

Despite COVID and staff absence, we have continued to prepare this advent period. This week our Key Stage 1 children have enjoyed creating this year's nativity, to be shared with parents next week. More to follow. In addition, all our children have enjoyed preparing offerings for this year's virtual Christmas Service. We have worked extremely hard to celebrate all that we are at this time.

Thank you also for your wonderful support in the Christmas Raffle. Tickets are still available until Sunday 13th December. The raffle tickets will be drawn on Monday 14th December after which we will communicate to all those winning ticket holder the good news. Despite all the difficulties, we continue to receive positive support, this is very much appreciated showing understanding of our children, parents and staff at this difficult time. This week a parent has commented:

*I just wanted to drop you a note to say thank you for taking the time to record the KSI Nativity this year. Events like this create special memories for both the children and parents so even after everything that 2020 has thrown at us we will end it with something very happy and memorable to cherish.*

Thank you all, we are stronger when we work and celebrate together.

Mr Len Batey-Headteacher-Barrowby CE Primary School

## Year 5 Ancient Egypt

On Friday 4th December, our Year 5 children turned their hands to making some Ancient Egyptian canopic jars! As part of their Egyptian topic, the children wrote instructions on how to make a 'mummy' and have been learning more about the mummification process.

As part of their DT, the boys and girls have planned and designed their very own canopic jars and have now had a go at creating their designs out of clay. The children have paid particular detail to the shaped heads of these jars – which are all shaped like Ancient Egyptian gods! Miss Kirk and Mrs Clark were very impressed with the attention to detail created by the children – well done Year 5.

## Reception Christmas Assembly Video AVAILABLE NOW

Also on Friday 4th December, this years Reception Christmas Assembly was uploaded to Tapestry for all our Reception families to enjoy at this festive time. If you haven't seen it yet, please log into Tapestry and enjoy the children performing Jingle Bells and Away in a Manger.

## Barrowby Village Sing-A-Long Design Competition

As you may recall, the children of Barrowby CE Primary School were invited to participate in the Barrowby Village Sing-A-Long design competition, to bring together the community to join in with song singing "We wish you a merry Christmas;" for all our friends, families, neighbours and of course our wonderful essential workers.

We are very excited to announce that this week, one of our Year 5 children received a special doorstep delivery to be presented with a framed copy of the winning design which will also be printed on the front cover of the song sheets distributed with the December edition of the Barrowby news. This event will take place on **Thursday 17th December at 6.00pm**. We hope you are able to join in with the singing.

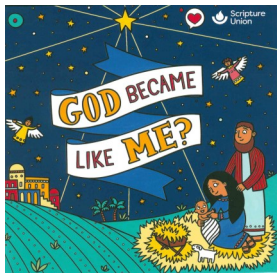


## Key Stage 1 Nativity

This week, KSI have begun to film their Nativity.....on location! around the school grounds. They cannot wait to share their production of 'God's Great Gift' with you next week to begin your festivities for Christmas. More to follow.

## God Became Like Me' - A Christmas Gift for Year 3

On Friday 11th December, our Year 3 children will bring home with them a Scripture Union booklet called 'God Became Like Me'.



A third of children and young people do not know that Christmas celebrates the birth of Jesus, let alone the extraordinary significance that this has for their lives. Scripture Union, as part of their 95 campaign have produced a new FREE resource to help churches share Jesus with children and young people that do not yet know him.

The beautiful new Christmas book, *God Became Like Me?*, is a poetic retelling of why Jesus came and how precious we are to him. It features stunning line illustrations that children can colour in while they ponder the words. We hope you enjoy sharing this wonderful book with your child/ren.

## Christmas Party Day

This year, on Wednesday 16th December we will be holding 'Bubble Parties' where all children will enjoy Christmas games in the morning, and our Reception and Key Stage 1 children will even have a secret 'virtual' visitor (as long as the elf-mail is working). This year we will not be able to enjoy a traditional Christmas lunch but we will enjoy a festive packed lunch with crackers in the classroom.



In the afternoon, the whole school will enjoy a virtual performance from the West Midlands Children's Theatre, with their Pantomime, 'Cinderella,' from their classrooms. Children may come to school wearing a Christmas Jumper/party, non-uniform clothes with all donations for this non-uniform event going to Save the Children.



We understand that this year has been difficult financially for lots of families and appreciate donations of any amount if you are able to. If you would like to make a small donation please send this into school with your child. If you wish to make a more substantial donation (£10 or more) then you can visit our Just Giving page by clicking [HERE](#). All monies raised will go to this very worthwhile charity. As always, thank you for your continued support.



## Christmas Party Day-Wrap Around Care Menu

This year, we are delighted with how our Breakfast and After School Clubs have been received. So, in order to help make our Christmas Party day a special day for all those children who attend this provision, Mrs Rafferty and Mrs hands have adapted the menu.



The Menu for the Christmas Party day-**Wednesday 16th December** is as follows:

### Breakfast Club

Croissants;  
'Pan au chocolat;' or  
pancakes with fresh fruit &  
squirry cream or honey.

### After-School Club

Pigs in blankets;  
Yorkshire pudding;  
potato wedges; with  
peas and gravy.

Mini mince pie for dessert.



### Christmas Raffle

Don't forget that raffle tickets are on sale through the school shop for the Christmas Raffle. We have a range of fabulous prizes – with the top prize of a Hotel Chocolat Velvetiser!

To buy your raffle tickets to be in with a chance of winning a fabulous prize:

- log in to ParentmailPMX;
- Click on **payments**
- Click on **Shop** at the bottom
- Then click on Book number required and **ADD TO BASKET**
- Repeat step above if you require further books
- When you have all of the books that you wish to purchase on this visit click **PAY NOW**

The raffle will be drawn on Monday 14<sup>th</sup> December and winners will be notified by ParentmaiPMX.

The prizes are as follows:

1st Prize: Hotel Chocolat Velviter

2nd Prize: Deluxe Christmas Hamper

3rd Prize: Dior-Joy Hamper

4th Prize: GTC 1 Year Mini Membership

5th Prize: Ladies Haircut and Finish

6th Prize: Pamper Hamper

7th Prize: £25.00 Gift Voucher: FarmFoods

8th Prize: Hamper

9th Prize: Movie Night Hamper

10th Prize: Voucher-Skinner's the Butcher

11th Prize: Fragrance of your choice from Allure by Amy



The closing date for purchasing tickets is midnight on Sunday 13th December.

Don't forget... you have to be in it win it !! Good luck everyone!

Thank you for your continued support.

### Reminders for Parents



- Reception and Key Stage 1 children need their PE kit in school for Monday 14th January for Christmas Potted Sports
- Key Stage 2 children need their PE kit in school for Tuesday 15th January for Christmas Potted Sports

### School Photographs

If you have placed an order with Tempest Photography for your child's school photograph, these have arrived in school today and will be sent home with your child.

### Events At School-Weekly Commendations

We would like to acknowledge the work completed at school by individual pupils by awarding our 'Headteacher Commendations.' This week the commendations go to:

<u>Reception and Key Stage 1</u>		<u>Key Stage 2</u>	
Mrs Banfield	Finley Meads	Mrs Webster	Summer Turner
Mrs Selby	Giles Fillingham	Mr Caton	Lennon Fovargue
Mrs Tinkley/ Mr Liversidge	Alarna Simpkins-Fowler	Miss Kirk	Poppy Beers
Miss Sugden	Ruby Warden	Miss Swatton	Jack Boyle
		Miss Lees	Jessica Whitfield

We would like to acknowledge children's effort and attitude at school by individual pupils by awarding our 'Shining Star Certificates.' This week the certificates go to:

<u>Reception and Key Stage 1</u>		<u>Key Stage 2</u>	
Mrs Banfield	Sophia Wright Rory Clayton	Mrs Webster	Eloise Harwood
Mrs Selby	Georgia Turner	Mr Caton	Betsy Milne
Mrs Tinkley/ Mr Liversidge	Adelle Pakulyte	Miss Kirk	Ava Langley
Miss Sugden	Abigail Sacker	Miss Swatton	Freddie Coulson
		Miss Lees	Noah Mason

### Times Tables Rockstars

This week, we would like to recognise the **Rock Legends** who have continued to learn and revise the times tables and associate division facts, using Times Tables Rockstars. This week, certificates are awarded for those children with the **highest number of correct answers** in their class. The **Rock Legends** are:



<b>The Biggest Improvement of Accuracy</b>	<b>Key Stage 2</b>
<b>Reception and Key Stage 1:</b> ST/JL Noah Holloway LS Isla-Mae Clark	Y3 Holly Clegg Y4 Betsy Milne Y5 Amelia Poole Y6 Logan Gray Y6 Ava Milham



Well done everyone!  
All certificates are emailed home to parents,  
the same date as the newsletter goes home:  
Friday at the end of the week.

<u>Weekly House Point Totals</u>		
<b>ARMSTRONG</b> <b>247</b>	<b>CHICHESTER</b> <b>196</b>	<b>SCOTT</b> <b>200</b>